

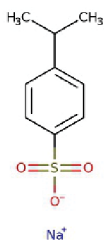


**DOLPHIN**  
PHARMACEUTICAL

## TECHNICAL DATA SHEET

**SODIUM CUMENE SULFONATE - 40%**  
**(SCSDOL-40)**  
**CAS No : 28348-53-0**

• **Structural Formula :**



• **Description :**

Synonyms : Sodium Cumene Sulfonate 40  
Chemical names : Sodium 3-(propan-2-yl)benzenesulfonate  
Chemical formula : C<sub>9</sub>H<sub>11</sub>SO<sub>3</sub>N

• **Specifications :**

Appearance : Clear to Lightly Yellow Liquid  
Active, % : 39.00 - 41.00 %  
Sodium Sulfate, % : NMT 2%  
pH : 7.50 - 9.50

• **Applications :**

Heavy-Duty Laundry Detergents, Light-Duty Liquid Detergents, Rinse Aids, Automatic Dishwash Liquid, Industrial Cleaners, Metal Preparation like electroplating, zinc plating etc.

• **Storage and Handling :**

Store covered in a dry, well ventilated area. Keep container tightly closed when not in use. Prevent from freezing This product will crystallize at 7°C and may precipitate from solution during storage. Store material above 10°C (50°F).

• **Packing :**

240 kg HDPE Drum, Tanker load

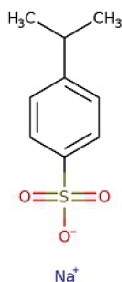


**DOLPHIN**  
PHARMACEUTICAL

## TECHNICAL DATA SHEET

### SODIUM CUMENE SULFONATE - 90% (SCSDOL-90) CAS No : 28348-53-0

• **Structural Formula :**



• **Description :**

Synonyms : Sodium cumene sulfonate, sodium isopropyl benzene sulfonate  
Chemical names : Sodium 3-(propan-2-yl)benzenesulfonate  
Chemical formula :  $C_9H_{11}SO_3Na$

• **Specifications :**

Appearance	: White to off white Solid Powder
Free Sulphate As Sulphuric Acid (%)	: NMT 3.5 %
pH of 1% or 10% aqueous sol.	: 7.0 - 10.0
Moisture Content (%)	: NMT 5.0 %
Assay (%)	: NLT 91.00 %
Clarity of 40% Solution in Distilled Water	: Clear

• **Applications :**

Heavy-Duty Laundry Detergents, Light-Duty Liquid Detergents, Rinse Aids, Automatic Dishwash Liquid, Industrial Cleaners, Metal Preparation, Emulsifying abilities.

• **Storage and Handling :**

Sodium Cumene Sulfonate should be stored in closed containers and kept in a cool and dry place.

• **Packing :**

- 15 kg HDPE Bag
- Custom on request